



Poisoned Rivers and Lakes



by Ellen Lawrence

[Intentionally Left Blank]



Poisoned Rivers and Lakes

by Ellen Lawrence

Consultants:

Daniel L. Ceynar

The Iowa Flood Center, IIHR Hydroscience & Engineering
The University of Iowa, Iowa City, Iowa

Kimberly Brenneman, PhD

National Institute for Early Education Research, Rutgers University
New Brunswick, New Jersey

BEARPORT
PUBLISHING

New York, New York

Credits

Cover, © chriscrowley/iStock/Thinkstock and © Boris Khamitsevich/iStock/Thinkstock; 2–3, © Pierre Crom/Photoshot; 4–5, © Robert Harding Specialist Stock/Corbis; 6, © Mike Kahn/Green Stock Media; 7T, © Creative Commons Public Domain; 7, © Wayne Hutchinson/FLPA; 8–9, © xpixel/Shutterstock; 10–11, © Craig Stephen/Alamy, © AlinaMD/Shutterstock, © mycola/Shutterstock, © Sergey Goruppa/Shutterstock, and © Sergey Dubrovskiy/iStock/Thinkstock; 12, © Darley Shen/Corbis; 13, © Santia/Shutterstock; 14, © fluke samed/Shutterstock; 15, © Jose B. Ruiz/Nature Picture Library; 16, © euroluftbild/Glowimages; 17, © UbsjP/Shutterstock; 18–19, © Laura K. Roberts/Iowa River Clean-up, Iowa City, Iowa; 20, © Marie-Françoise Hatte/Deerfield River Watershed Association; 21TL, © Monkey Business Images/Shutterstock; 21BL, © Moreno Soppelsa/Shutterstock; 21TR, © photobank.ch/Shutterstock and © Matt Valentine/Shutterstock; 21BR, © Monkey Business Images/Shutterstock; 22, © Sergey Goruppa/Shutterstock and © artzenter/Shutterstock; 23L, © Portokalis/Shutterstock; 23TR, © RTImages/Shutterstock; 23BR, © Laura K. Roberts/Iowa River Clean-up, Iowa City, Iowa.

Publisher: Kenn Goin

Editor: Jessica Rudolph

Creative Director: Spencer Brinker

Design: Emma Randall

Photo Researcher: Ruby Tuesday Books Ltd

Library of Congress Cataloging-in-Publication Data in process at time of publication (2014)

Library of Congress Control Number: 2013043670

ISBN-13: 978-1-62724-105-2 (library binding)

Copyright © 2014 Bearport Publishing Company, Inc. All rights reserved. No part of this publication may be reproduced in whole or in part, stored in any retrieval system, or transmitted in any form or by any means, electronic, mechanical, photocopying, recording, or otherwise, without written permission from the publisher.

For more information, write to Bearport Publishing Company, Inc., 45 West 21st Street, Suite 3B, New York, New York 10010. Printed in the United States of America.

10 9 8 7 6 5 4 3 2 1





Contents



A Polluted Home	4
Harmful Trash.....	6
Poisonous Water	8
Chemicals from Farms	10
Dangerous Slime	12
From Stream to Ocean.....	14
Stop the Pollution!	16
River Cleanup	18
Everyone Can Help.....	20
 Science Lab	22
Science Words	23
Index	24
Read More	24
Learn More Online	24
About the Author.....	24



A Polluted Home

A swan searches for plants and insects to eat in a river.

However, it's hard for the bird to find food.

That's because there's so much trash in the water.

Trash isn't the only **pollution** that's spoiling the swan's river home.

The water also contains other pollution that can't even be seen!

- Garbage in a stream, river, or lake
- might include food containers, cans, and plastic bottles.
- Large items, such as tires and supermarket carts, sometimes
- end up in the water as well.



A photograph of a white swan with a black beak and a small black patch around its eye, swimming in a river. The water is murky brown and filled with various pieces of trash. To the left of the swan, there is a clear plastic cup and a green plastic bottle. In the foreground, there is a white plastic container and some orange leaves. The swan is looking down at the water, and a red arrow points from the text box to its head.

a swan looking
for food in a river

What kinds of trash can you see
in this picture? How do you think
the trash got into the water?



Harmful Trash

How does trash get into streams, rivers, and lakes?

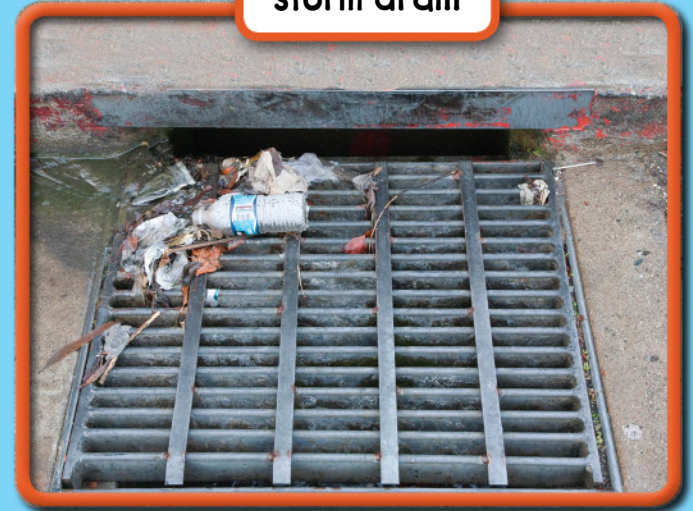
Sometimes, people dump it into the water or drop it from a boat.

Other times, people leave litter on the ground and the wind blows it into the water.

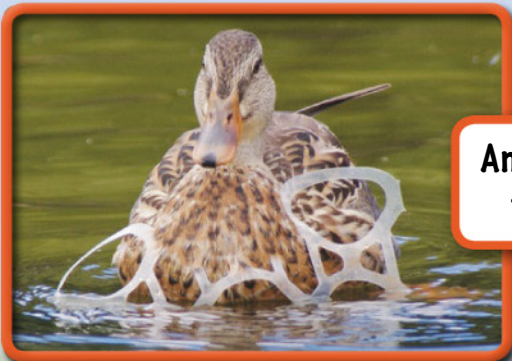
Fish, birds, and other animals often eat the trash because they think it's food.

Eating garbage can make animals very sick—and even kill them!

storm drain



- Rain can wash trash left on the
- street down a **storm drain**. Then
- the trash is carried by rainwater
- through underground pipes into
- a stream, river, or lake.



Animals can also get tangled in trash.



garbage dumped near a river

Index

algae 10–11, 12–13

animals 4–5, 6–7, 8–9, 11, 12,
14–15, 16–17, 22

chemicals 8–9, 10–11, 14, 16,
20–21, 22

drinking water 16

factories 8, 16, 21

farms 10–11, 16, 21

Iowa River 18–19

oceans 13, 14, 20, 22

oil 9, 14, 21, 22

plants 4, 11, 12, 16, 22

recycling 18, 21

storm drains 6, 9, 20–21, 22

Read More

Goodman, Polly. *Rivers in Danger (Earth Alert!)*. New York: Gareth Stevens (2012).

Mason, Paul. *Rivers Under Threat (World in Peril)*. Chicago: Heinemann (2009).

Learn More Online

To learn more about polluted rivers and lakes, visit
www.bearportpublishing.com/GreenWorldCleanWorld

About the Author

Ellen Lawrence lives in the United Kingdom. Her favorite books to write are those about nature and animals. In fact, the first book Ellen bought for herself, when she was six years old, was the story of a gorilla named Patty Cake that was born in New York's Central Park Zoo.

[Intentionally Left Blank]



Poisoned Rivers and Lakes

Rivers and lakes are home to fish, birds, frogs, and many other animals. Unfortunately, these places are also often polluted with plastic bottles and other garbage, as well as chemicals from factories and farms. Luckily, there are ways to stop this from happening. Look inside to find out how pollution ends up in our rivers and lakes and what you can do to help protect them.

Dirty Air

Garbage Galore

Global Warming

Poisoned Rivers and Lakes

Polluted Oceans

BEARPORT
PUBLISHING

www.bearportpublishing.com



ISBN-13: 978-1-62724-105-2



9 781627 241052

9 0000